

Safety



Safety

OUTLETS NATIONWIDE

600

Safety

A wide range of Personal Protective Equipment (PPE) suitable for many work activities.

The range caters for eye, hearing,

respiratory, hand, foot, head and full body protection. We also offer conspicuity gear and products specifically for welding disciplines.

In addition we offer a range of comprehensive first aid kits and miscellaneous safety products.



602

Eye Protection



603

Hearing Protection



603

Respiratory Protection



604-605

Hand Protection



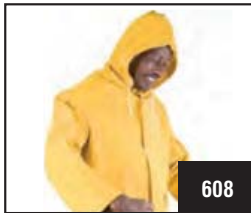
606

Foot Protection



607

Overalls



608

Rain Suits



608

Conspicuity Gear



608-609

Welding Safety Gear



609

Head Protection



610-611

First Aid Kits



611

Miscellaneous

MAT-SAFE SAFETY SPECTACLES

- Heavy duty plastic frame
- Clear polycarbonate protective lenses



Code
COM0730

MAT-SAFE SAFETY SPECTACLES

- Heavy duty plastic frame
- Clear polycarbonate protective lenses



Code
COM0735

MAT-SAFE TINTED SAFETY SPECTACLES

- Tinted wrap around safety



Code
COM1250

MAT-SAFE WRAP AROUND SAFETY SPECTACLES

- Wrap around for extra protection
- Heavy duty plastic frame
- Clear polycarbonate protective lenses



Code
COM0740



MAT-SAFE CLEAR SPECTACLES

- Safety spectacles with PVC frame



Code
DOR1200



MAT-SAFE CLEAR SPECTACLES - BLACK FRAME

- Clear lenses
- Black frame
- Polycarbonate lenses
- Use when grinding, cutting, hammering & chipping



Code
DOR1180



MAT-SAFE WRAP AROUND CLEAR SPECTACLES

- Clear lenses
- Wrap around frame
- Polycarbonate lenses
- U.V. Resistant
- Use when grinding, cutting, hammering, chipping



Code
DOR1185



MAT-SAFE TINTED SPECTACLES - BLACK FRAME

- Green tinted lenses
- Black frame
- Polycarbonate lenses
- Use when grinding, cutting, hammering & chipping



Code
DOR1190



MAT-SAFE CLEAR GOGGLES

- Comfortable and flexible
- Adjustable head strap
- Suitable for general eye protection while grinding, sanding etc
- Air vents for comfort



Code
WAN0340



MAT-SAFE CLEAR FACE SHIELD

- Clear, full face protective shield, for woodworking and general industrial use



Code
RHN0002



EARMUFFS - RED CUP

- Red plastic soft comfortable ear cups
- Adjustable head band
- High sound insulation capacity
- Essential for any one operating noisy equipment



Code

DOR1100



EARPLUGS

- Soft plastic
- Fixed to a rigid Alice band
- For moderate noise levels



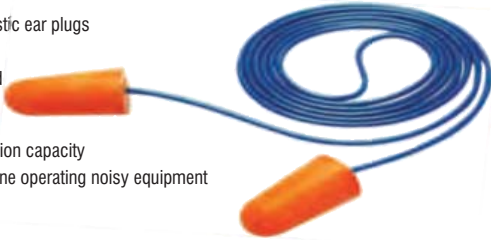
Code

COM0405



PLASTIC EAR PLUGS

- Poly-vinyl soft plastic ear plugs
- On a captive cord
- Individually packed in Poly -plastic bags
- High sound insulation capacity
- Essential for any one operating noisy equipment



Code

DOR1150



PLASTIC EAR PLUGS - CORDLESS

- Poly-vinyl soft plastic ear plugs
- Two plugs per set - without cord
- Individually packed in Poly -plastic bags
- High sound insulation capacity
- Essential for any one operating noisy equipment



Code

DOR1160



PVC EAR PLUGS

- Poly-vinyl soft PVC ear plugs
- On a captive cord
- Individually packed in Poly -plastic bags
- High sound insulation capacity
- Essential for any one operating noisy equipment



Code

DOR1120



DUST MASKS

- A superior disposable half-mask, with double straps
- Protection against non-toxic solid aerosols in concentrations up to 4, 5, 12 MAC/OEL/TLV
- EN 149 compliant & SABS approved



Code	Type	Code	Type
DOR1500	Industry 20/Box	DOR1510	Mines 20/Box
DOR1490	Industry - Each	DOR1480	Mines - Each



DOUBLE HALF MASK RESPIRATOR

- Double half mask, soft plastic body covers nose and mouth
- Uses two filters (Not included)
- Ensure that the correct filter type for the specific application is selected



Code

COM1000



SINGLE HALF MASK RESPIRATOR

- Single half mask, soft plastic body covers nose and mouth
- Uses one filter (Not included)
- Ensure that the correct filter type for the specific application is selected



Code

COM1010



DUST FILTER FOR RESPIRATOR

- D2/P2 filter only (white) for dust, mist & fumes



Code

COM1050



VAPOUR FILTER FOR RESPIRATOR

- C8/A1 filter only (brown) for organic vapours & solvents



Code

COM1060

MAT-SAFE PVC GLOVES

- For general industrial use



Code	Cuff Size	Pack
COM0530	64mm	Loose
COM0565	64mm	Carded
COM0550	204mm	Loose
COM0570	204mm	Carded

MAT-SAFE PVC GLOVES - KNITTED CUFFS

- For general industrial use



Code	Cuff Size	Pack
COM0500	50mm	Loose
COM0560	50mm	Carded

MTs QUALITY TOOLS PVC GLOVES - KNIT CUFF

- Medium weight
- Smooth finish
- Knit wrist
- Red



Code	Cuff Size
WAN0200	260mm

MTs QUALITY TOOLS PVC GLOVES

- Medium weight
- Smooth finish
- Red



Code	Cuff Size
WAN0205	270mm
WAN0210	400mm

MTs QUALITY TOOLS DISPOSABLE VINYL GLOVES

- Latex free, non-allergic, vinyl gloves
- Lightly powdered with roll cuff
- Single use
- Fits either hand, easy-on / easy off
- Non-sterile



Code
WAN0070

MTs QUALITY TOOLS CANDY STRIPE CHROME LEATHER GLOVES

- Chrome leather with candy stripe back
- Double palm
- WAN0090PM - economy version



Code	Cuff Size	Pack
WAN0090PM	50mm	Loose
WAN0095	50mm	Loose
WAN0500	50mm	Carded

MTs QUALITY TOOLS CHROME LEATHER - DOUBLE PALM

- Chrome leather
- Double palm
- Heavy duty



Code	Cuff Size
WAN0100	50mm
WAN0110	204mm
WAN0120	400mm

MTs QUALITY TOOLS CHROME LEATHER ECONOMY GLOVES

- Welding glove
- Single palm - economy



Code	Cuff Size	Pack
WAN0125	50mm	Loose
WAN0520	50mm	Carded

MTs QUALITY TOOLS FURNITURE GLOVES - LEATHER

- High quality soft leather palm with good quality canvas back and cuff
- Black and yellow finish



Code	Cuff Size
WAN0130	50mm

MTs QUALITY TOOLS GREEN LINED GLOVES - HEAVY DUTY

- Fully lined welding glove
- WAN0140PM - economy option



Code	Cuff Size	Pack
WAN0140PM	64mm	Loose
WAN0530	64mm	Carded
WAN0540	204mm	Carded
WAN0152	400mm	Loose

MTs QUALITY TOOLS GREEN / YELLOW WELDING GLOVES

- Welding glove fully lined



Code	Cuff Size
WAN0150	204mm

Safety



BUILDERS GLOVES

- Black Latex Glove for plasterers and builders
- Ideal for industrial use



Code	Size
WAN0154	XL



COTTON KNIT GLOVE

- Light duty knitted poly cotton glove



Code
WAN0158



CRAYFISH KNIT GLOVES

- Polycotton knitted gloves with red rubber sheet coated on palm



Code
WAN0122



LATEX GLOVE - CANVAS CUFF

- Yellow latex glove with canvas cuff
- GP industrial glove



Code	Cuff Size	Pack
WAN0225	50mm	Loose
WAN0600	50mm	Carded



YELLOW LATEX - HOUSEHOLD GLOVE

- Yellow latex glove
- For general purpose household and light duty use
- Flock lined



Code	Size
WAN0156	Small
WAN0155	Med
WAN0157	Large



LATEX GLOVES WITH KNITTED CUFF

- Yellow latex glove with knitted cuff for heavier work



Code	Cuff Size	Pack
WAN0220	50mm	Loose
WAN0620	50mm	Carded



NITRILE GLOVES - RF15

- Heavy duty industrial glove
- Protects against chemicals, acid, oil and detergents



Code	Size
WAN0159	XL



PIGSKIN GLOVES

- All pigskin glove
- Used for argon tig welding
- Ideal for truck, forklift & motorcycle drivers



Code	Cuff Size
WAN0170	50mm



GLOVE CANDY STRIPE - CANVAS CUFF

- A good general purpose glove for household and garden
- WAN0160PM - economy option



Code	Cuff Size	Pack
WAN0160PM	50mm	Loose
WAN0570	50mm	Carded



POLKA DOT GLOVES

- A knitted cotton glove with non-slip rubber polka-dots
- Ideal for gardening



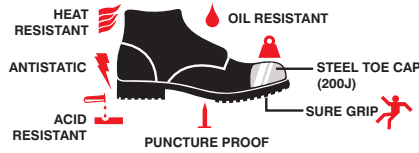
Code	Cuff Size	Pack
WAN0180	50mm	Loose
WAN0590	50mm	Carded

MAT-SAFE SAFETY BOOT CHUKKA BLACK 1071

- Safety Boot with foam padding to protect ankle
- Full insole sock for added comfort
- Fitted with a 200 joule steel toe cap to comply with safety specifications



Code	Size
PMR1006	6
PMR1007	7
PMR1008	8
PMR1009	9
PMR1010	10
PMR1011	11
PMR1012	12



MAT-SAFE SAFETY BOOT ECONOMY BLACK 4201

- Budget safety boot, ankle length
- Full insole sock
- 200 joule steel toe cap
- PVC Nitrile oil and acid resistant sole



Code	Size
PMR1106	6
PMR1107	7
PMR1108	8
PMR1109	9
PMR1110	10
PMR1111	11
PMR1112	12



MAT-SAFE SAFETY BOOT SABS 2001

- Safety boot with padded ankle protection
- Full insole sock
- 200 joules steel toe cap
- Polyurethane direct injected anti-static
- Oil and acid resistant sole



Code	Size
PMR1306	6
PMR1307	7
PMR1308	8
PMR1309	9
PMR1310	10
PMR1311	11
PMR1312	12

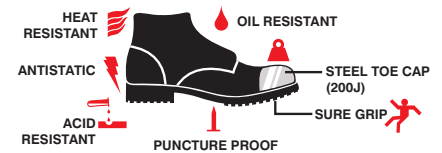


MAT-SAFE SAFETY SHOE - STEEL CAP 3021

- Safety shoe with full insole sock
- 200 joules steel toe cap
- Oil and acid resistant sole



Code	Size
PMR2006	6
PMR2007	7
PMR2008	8
PMR2009	9
PMR2010	10
PMR2011	11
PMR2012	12



MAT-SAFE SAFETY TAKKIES BATA STEEL TOE CAP

- Safety shoes have a rubber outsole with a lightweight phylon midsole
- Suede and mesh padded uppers and shaped innersole
- Shoes conform to the CE 20345 safety specification with a steel toe cap
- Are also anti-static and have reflective material on the upper for additional safety
- These shoes have the properties of a sport shoe but can also be used in areas that require safety
- Not ideal in wet environments



Code	Size
WAY2005	5
WAY2006	6
WAY2007	7
WAY2008	8
WAY2009	9
WAY2010	10
WAY2011	11
WAY2012	12

MAT-SAFE GUMBOOT KNEE LENGTH BLACK

- General purpose gumboots are made from PVC
- Waterproof, but have no steel toe cap
- Gumboots can also be used in some oils and acids, but type and concentration
- are important to assess first before use
- Gumboots are perfect for use in agriculture, some areas of construction and many applications in light industry



Code	Size
WAY1006	6
WAY1007	7
WAY1008	8
WAY1009	9
WAY1010	10
WAY1011	11
WAY1012	12

OVERALL 2PC ROYAL BLUE

- The 2 piece polycotton overall is designed with front yokes and a set-in long sleeve
- Plain backed jacket and 2 side pockets on both jacket and trousers
- Trousers also include a hip pocket and half runched waist with belt loops
- Jacket has a breast pocket with Monza style flap
- Jacket and trousers have a concealed YKK zip front closure
- The overall is triple stitched across all key seams for extra strength



Code	Size	Code	Size
MAB3000	34	MAB3030	46
MAB3005	36	MAB3035	48
MAB3010	38	MAB3040	50
MAB3015	40	MAB3045	52
MAB3020	42	MAB3050	54
MAB3025	44		

OVERALL 2PC GREY

- The 2 piece polycotton overall is designed with front yokes and a set-in long sleeve
- Plain backed jacket and 2 side pockets on both jacket and trousers
- Trousers also include a hip pocket and half runched waist with belt loops
- Jacket has a breast pocket with Monza style flap
- Jacket and trousers have a concealed YKK zip front closure
- The overall is triple stitched across all key seams for extra strength



Code	Size	Code	Size
MAB3500	34	MAB3560	46
MAB3510	36	MAB3570	48
MAB3520	38	MAB3580	50
MAB3530	40	MAB3590	52
MAB3540	42	MAB3600	54
MAB3550	44		

OVERALL 2PC RED

- The 2 piece polycotton overall is designed with front yokes and a set-in long sleeve
- Plain backed jacket and 2 side pockets on both jacket and trousers
- Trousers also include a hip pocket and half runched waist with belt loops
- Jacket has a breast pocket with Monza style flap
- Jacket and trousers have a concealed YKK zip front closure
- The overall is triple stitched across all key seams for extra strength



Code	Size	Code	Size
MAB4000	34	MAB4060	46
MAB4010	36	MAB4070	48
MAB4020	38	MAB4080	50
MAB4030	40	MAB4090	52
MAB4040	42	MAB4100	54
MAB4050	44		

OVERALL 2PC EMERALD

- The 2 piece polycotton overall is designed with front yokes and a set-in long sleeve
- Plain backed jacket and 2 side pockets on both jacket and trousers
- Trousers also include a hip pocket and half runched waist with belt loops
- Jacket has a breast pocket with Monza style flap
- Jacket and trousers have a concealed YKK zip front closure
- The overall is triple stitched across all key seams for extra strength



Code	Size	Code	Size
MAB3800	34	MAB3860	46
MAB3810	36	MAB3870	48
MAB3820	38	MAB3880	50
MAB3830	40	MAB3890	52
MAB3840	42	MAB3900	54
MAB3850	44		

OVERALL BOILERSUIT ROYAL BLUE

- The standard 2 pocket boilersuit is manufactured from polycotton with a button front closure and breast pocket
- Side vents on the jacket allow for more freedom of movement and the trousers include a convenient hip pocket



Code	Size	Code	Size
MAB2000	34	MAB2025	44
MAB2005	36	MAB2030	46
MAB2010	38	MAB2035	48
MAB2015	40	MAB2040	50
MAB2020	42		

OVERALL DUST CO/ROYAL BLUE

- Made from polycotton the dust coat has a 4 button front closure with 2 side pockets and a long set in sleeve with plain cuff
- It also includes a breast pocket with convenient pen division
- An overlapping back vent allows for freedom of movement
- All seams are double needle stitched with 5-thread safety and all garment stress points are bar tacked to ensure the durability of the dust coat



Code	Size	Code	Size
MAB2510	34	MAB2513	44
MAB2503	36	MAB2315	46
MAB2505	38	MAB2317	48
MAB2507	40	MAB2520	50
MAB2500	42		

MAT-SAFE RAIN SUIT - NAVY

- 2 pieces rubberized rain suit
- Draw string hood and strong cuff
- Elastic wrist trousers



Code	Size
WAN0900	M
WAN0910	L
WAN0920	XL
WAN0930	XXL
WAN0940	XXXL

MAT-SAFE RAIN SUIT - PVC YELLOW

- 2 pieces yellow PVC/Polyester rain suit
- Draw string hood, zipper and plastic popper buttons
- Elastic wrist trousers



Code	Size
WAN1010	M
WAN1000	L
WAN1020	XL
WAN1030	XXL
WAN1040	XXXL

MAT-SAFE SAFETY JACKET WITH LIGHTS

- Reflective Strip Markings
- Lightweight and comfortable
- Illuminated for conspicuity
- Requires 2 x AA Batteries (included)



Code
SAB0900

MAT-SAFE SAFETY - MAXI BIB

- Reflective Strip Markings
- Lightweight and comfortable



Code	Colour
SAB1000	Orange
SAB1010	Yel/Grn

MAT-SAFE SAFETY WAISTCOAT

- Reflective Strip Markings
- Lightweight and comfortable



Code	Colour
SAB1100	Orange
SAB1150	Yel/Grn

MAT-SAFE APRON & SPATS

- Chrome leather, full front welder's apron with straps
- Adjustable with straps (per pair)



Welder's Apron
Chrome
Leather

Welder's
Leather
Spats
Adjustable

Code	Item
GBL0050	Apron
GBL0080	Spats

MAT-SAFE GAS WELDING GOGGLES - FLIP FRONT

- Comfortable
- Adjustable elasticated strap
- Spare lenses are available



Code
COM0720
COM0720P

MAT-SAFE GAS WELDING GOGGLES

- Comfortable
- Adjustable elasticated strap
- Spare lenses are available



Code
COM0700

AUTO DARKENING

- Solar powered auto-darkening lens is ANSI approved
- Reaction time 1/25'000 second
- Darkness shade control 9-13 (clear state #3/4)
- Full face coverage
- Padded head bank with ratchet adjustment
- Moulded polycarbonate construction
- Spare lenses available (see below)



Code	Description
HON3022	Helmet
HON3033	Lens

AUTO DARKENING & GRINDING HELMET

- Suitable for MIG & Stick Welding
- Solar Powered Auto-Darkening Lens is ANSI Approved
- Reaction Time 1/25'000 Second
- Darkness Shade Control 9-13 (Clear State #3/4)
- Light to Dark Time 0.00004 Sec.
- Adjustable Dark to Clear Delay
- UV/IR Protection up to DIN 16 Shade at all Times



IDEAL FOR FABRICATION SHOPS & CONSTRUCTION

Code	Description
HON3023	Helmet
HON3024	Head Strap

FLIP FRONT WELDING HELMET

- Standard flip front welding helmet
- Adjustable head strap
- Spare head strap is available



Code	Description
HON3030	Helmet
HON3031	Head Strap

WELDING CURTAINS

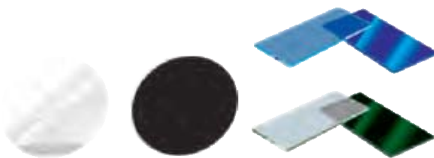
- Supplied with eyelets
- Special sizes on request



Code	Size
MAT0100	2 x 2m
MAT0110	3 x 2m

SPARE LENSES

- Spare lenses are available for selected goggles and helmets



Code	Colour	Code	Colour
SC00500	Clear	SC00640	Shaded
SC00600	Clear	SC00650	Shaded
SC00610	Clear	SC00660	Shaded
SC00800	Shaded	SC00700	Clear
SC00625	Shaded	SC00890	Shaded
SC00630	Shaded	SC00900	Shaded

HARD HATS

- Athol Safety Cap
- Jockey style
- High density polyethylene
- 6-point lining
- SABS & GME approved



Code	Colour	Code	Colour
RHN0035	Blue	RHN0037	Red
RHN0036	Green	RHN0038	White
		RHN0039	Yellow

MAT-SAFE FIRST AID KIT – MINI FS-003



Contents:

- 1 pc - Triangular Bandage
- 1 pc - Elastic Bandage
- 1 Roll - Roll Adhesive Tape
- 4 pcs - Safety pins
- 1 pair - Scissors
- 1 pc - Mouth to mouth Mask
- 1 pc - Large size band aid
- 1 pc - Wet tissue (NaCl)
- 1 pc - Wet tissue (soap)
- 1 Pc - Non-woven swab
- 5 Pcs - Band aid
- 1 Pc - Nylon Bag (12.5 x 8 x 5.5cm)

Code
OMN1000

MAT-SAFE FIRST AID KIT – HOME FS-058



Contents:

- 2 Rolls - Conforming bandage
- 10 Pcs - Alcohol pad
- 3 Pcs - Moist towelette
- 2 Pkts - Gauze pad 5.1 x 5.1cm
- 2 Pkts - Gauze pad 7.6 x 7.6cm
- 1 Pair - Scissors
- 2 Pcs - Combine Pad
- 5 Pcs - Adhesive bandage
- 4 Pcs - Adhesive bandage H Size
- 2 Pcs - Adhesive bandage Butterfly
- 1 Pc - CPR face shield
- 1 Pair - Plastic tweezers
- 1 Pc - Triangular bandage
- 10 Pcs - Safety pins
- 1 Pair - PVC gloves
- 2 Pcs - Emergency blanket
- 1 Pc - Cold pack
- 1 Pc - Nylon bag 20.5 x 14 x 5.5cm

Code
OMN1050

MAT-SAFE FIRST AID KIT - CAR - PS-087



Contents:

- 1 Pc - Adhesive tape
- 3 Pcs - Wound dressing
- 1 Pc - Standard dressing
- 2 Rolls - Conforming bandage 6cm
- 3 Rolls - Conforming bandage 8cm
- 1 Pair - Scissors
- 3 Pcs - Wound dressing 10 x 10cm
- 8 Pcs - Adhesive plaster 6 x 10cm
- 2 Pcs - Burn dressing 40 x 60cm
- 2 Pcs - Burn dressing 60 x 80cm
- 1 Pc - Emergency blanket
- 2 Pcs - Triangular bandage
- 4 Pcs - Disposable gloves
- 1 Pc - First aid booklet
- 1 Pc - Nylon bag 19 x 11.5 x 12.5cm

Code
OMN1100

MAT-SAFE FIRST AID KIT – STANDARD - FS-049



Contents:

- 1 Pc - 1Pc Triangular bandage
- 1 Pc - 1Pc CPR face shield
- 1 Pcs - 1Pcs Adhesive tape
- 4 Pcs - 4 Pcs Cleansing wipes
- 1 Pair - 1pair M-Utility scissors
- 2 Pcs - 2 Pcs Soap wipes
- 2 Pcs - 2 Pcs Emergency blanket
- 2 Pcs - 2 Pcs Antiseptic wipes
- 1 Pc - 1 Pc Combine pad
- 2 Pcs - 2 Pcs Alcohol wipes
- 2 Pkts - 2 Pkts Gauze swab
- 2 Pcs - 2 Pcs Film dressing
- 6 pair - 6 pair PVC gloves
- 1 Pc - 1 Pc Tweezers
- 1 Pc - 1 Pc Eye pad
- 1 Pkt - 1 Pkt Rayon balls
- 1 Pc - 1 Pc Cold pack
- 8 Pcs - 8 Pcs Elastic fabric plaster
- 10 Pcs - 10 Pcs Safety pins
- 2 Pcs - 2 Pcs First aid dressing
- 20 Pcs - 20 Pcs Adhesive strips
- 2 Pcs - 2 Pcs Bandage
- 4 Pairs - 4 Pairs Butterfly plasters
- 1 Pc - 1 Pc Nylon bag 24 x 18 x 7.5cm
- 4 Pcs - 4 Pcs Adhesive plaster, KN

Code
OMN1150

MAT-SAFE FIRST AID KIT - STANDARD - REG-3



Contents:			
1Pc	Cotton wool 50g	10 Pcs	Safety pins
1Pcs	Adhesive tape	20 Pcs	Adhesive strips
1pair	M-Utility scissors	1 PC	Elastic fabric plaster
2 Pcs	wooden splint	4 Pc	Bandage 100mm
1 Pc	Splint wadding	4 Pc	Bandage 75mm
2 Pkts	Gauze swab (5Pc)	4 Pc	Stretch bandage 75mm
1 Pkt	Gauze swab (100Pc)	4 Pc	Stretch bandage 150mm
4 pair	PVC gloves	2 Pairs	Mouth to mouth resuscitation Device
1 Pc	Tweezers	4 Pc	Arm slings
1 Pc	Wound cleaner	1 Pc	Metal first aid box

Code
OMN1200



Safety

MAT-SAFE BARRIER FENCING

- Orange coloured
- H.D Plastic type material
- It offers no resistance to access
- This is not protective type fencing
- It is intended only to indicate a barrier



Code	Size
WAN2500	1M X 50M Roll

MAT-SAFE FIRE EXTINGUISHER

- Natex STP 1.0 kg
- Dry powder type
- Fire extinguisher for class: A,B and C type fires



Code	Size
UNS0060	1kg